

Mandala Offering

LONG MANDALA OFFERING

OM BEN ZA BHU MI AH HUNG
ZHI NAM PAR DAK PA WANG CHEN SER GYI SA ZHI

OM BEN ZA REK HE AH HUNG
CHI CHAK RI KHOR YUK GI RA WE YONG SU KOR WAY
Ü SU RI GYÄL PO RI WO CHOK RAP

SHAR LÜ PHAK PO
LHO DZAM BÜ LING
NUP BA LANG CHÖ
JANG DRA MI NYEN
LÜ DANG LÜ PAK
NGA YAP DANG NGA YAP ZHEN
YO DEN DANG LAM CHOK DRO
DRA MI NYEN DANG DRA MI NYEN GYI DA

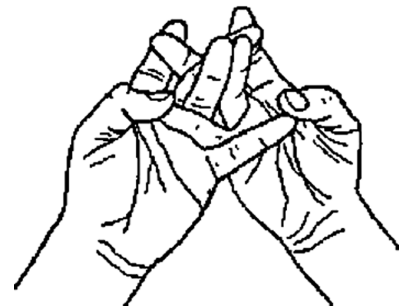
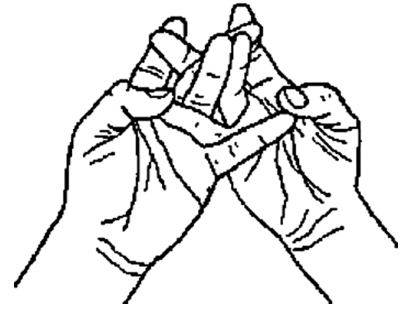
RIN PO CHAY RI WO, PAK SAM GYI SHING
DÖ JÖ PA, MA MÖ PAY LO TOK

KHOR LO RIN PO CHE, NOR BU RIN PO CHE
TSÜN MO RIN PO CHE, LÖN PO RIN PO CHE
LANG PO RIN PO CHE, TA CHOK RIN PO CHE
MAK PÖN RIN PO CHE, TER CHEN PÖ BUM PA
GEK MO MA, TRENG WA MA, LU MA
GAR MA, ME TOK MA, DUK PÖ MA
NANG SÄL MA, DRI CHAP MA, NYI MA, DA WA, RIN PO CHE DUK
CHOK LE NAM PAR GYÄL WÄ GYÄL TSEN
Ü SU LHA DANG MI PÄL JOR PHÜN SUM TSOK PA MA TSANG WA ME PA,
RAP JAM GYAL TSHO DUL GYI DRANG LE DE PA NGOM PAR KÖ DE
LA MA YI DAM SANG GYE JANG CHUP SEM PA
PA WO KHAN DRO CHÖ KYONG SUNG MAY CHO DANG
CHE PA NAM LA BUL WAR GYIO
TUK JE DRO WÄY DÖN DU ZHE SU SÖL
ZHE NE JIN GYI LAP TU SOL

SA ZHI PO GHU JUK SHING ME TOK TRAM
RI RAP LING ZHI NYI DE GYEN PA DI
SANG GYE ZHING DU MIK TE PHUL WA YI
DRO KUN NAM DAK ZHING LA CHO PAR SHOG

SHORT MANDALA OFFERING

SA ZHI PO GHU JUK SHING ME TOK TRAM
RI RAP LING ZHI NYI DE GYEN PA DI
SANG GYE ZHING DU MIK TE PHUL WA YI
DRO KUN NAM DAK ZHING LA CHO PAR SHOG

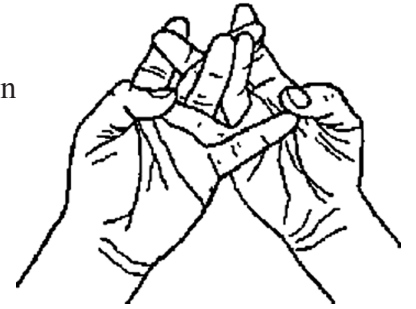


Mandala Offering

OM Benza ground AH HUNG, great powerful golden ground.

OM Benza fence AH HUNG, at the outermost limit a circular iron mountain chain surrounds Mount Meru, king of mountains.

In the east is the continent of Lupagpo,
In the south, the continent of Dzambuling,
In the west, the continent Balangcho,
In the north, the continent Draminyan.



At the two sides of the eastern continent are the two sub-continents Lu and Lupag.
At the two sides of the southern continent are the two sub-continents Ngayab and Ngayabzhan.
At the two sides of the western continent are the two sub-continents Yoden and Lamchogdro.
At the two sides of the northern continent are the two sub-continents Draminyan and Draminyangyida.

In the east the treasure mountain,
In the south the wish-granting tree,
In the west the wish-granting cow,
In the north uncultivated crops.

The precious wheel, the precious jewel, the precious queen, the precious minister, the precious elephant,
the precious supreme horse, the precious householder, the great treasure vase.

The goddess of grace, goddess of garlands, goddess of song, goddess of dance, goddess of flowers,
goddess of incense, goddess of light, goddess of perfume.

The sun, the moon, the umbrella of all precious things, the banner of victory in every direction,
and in the centre, all the possessions precious to gods and humans.

This magnificent and glorious collection, lacking in nothing, I offer to you, root and lineage gurus, and
particular to Lama Tsong Khapa , King of Sages, Maha-Vajradhara together with the entire assembly of
deities.

For the welfare of sentient beings, please accept these offerings through your compassion, and thus may I
and all beings throughout space receive blessings.

